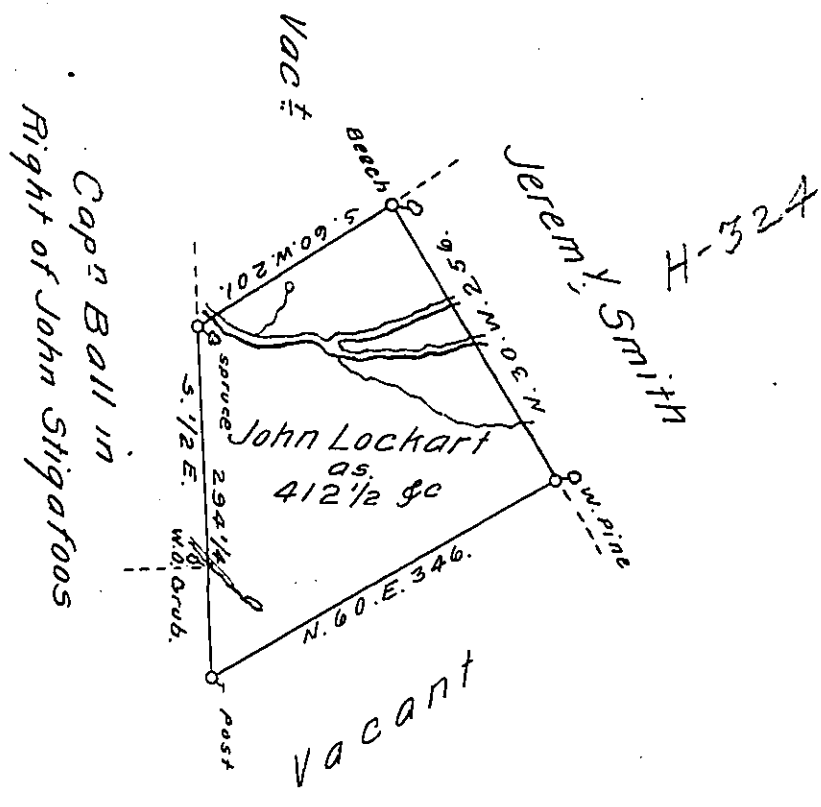


Butler 498  
DENISON -  
LUZERNE.



A Draft of a tract of land Called — Situate on a Branch of Nescopeck Creek in the County of Luzerne. Containing four Hundred & twelve Acres 1/2 & Allow<sup>e</sup>. Surveyed June 12<sup>th</sup> 1793 for John Lockart by Virtue of a Warrant dated the 24<sup>th</sup> Dec<sup>r</sup> 1792.

Daniel Brodhead Esq<sup>r</sup> } by W<sup>m</sup>. Gray D. S.  
 Surv<sup>r</sup>. Gen! }

IN TESTIMONY that the above is a copy of the original remaining on file in the Department of Internal Affairs of Pennsylvania, made conformably to an Act of Assembly approved the 16th day of February, 1833, I have hereunto set my Hand and caused the Seal of said Department to be affixed at Harrisburg, this third day of May 1912.

*Nancy Howell*  
 Secretary of Internal Affairs.